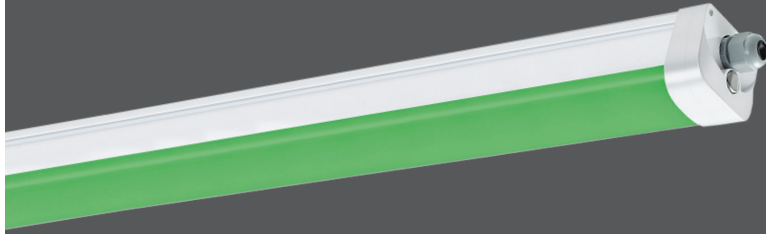


Project Name:	Type:
Note:	Date:

LED LIGHTING SOLUTION FOR COMMERCIAL INDOOR AND GREENHOUSE APPLICATIONS

Plant-Safe, Soft Green *Emergency Light*



GPS-EMGN

The GPS-EMGN is a tri-proof LED light, which means that the luminaire possesses at least three 'proofing' properties. Earning its name, the GPS-EMGN is waterproof, dust-proof, and corrosion-proof. The GPS-EMGN emits a plant-safe, soft green light ideal for use in safely illuminating the dark plant cycle when growing short-day crops. The cannot be easily "seen" by plants allowing for critical tasks to be performed in the grow rooms during the dark cycle without the light adversely affecting the growth stage of the plant.

INTENDED APPLICATIONS

- Hydroponic growing
- Indoor greenhouse

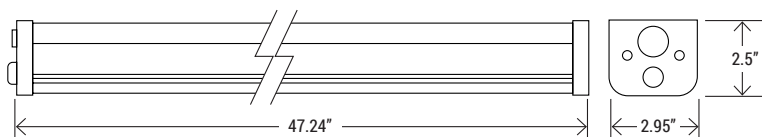
FEATURES & BENEFITS

- Excellent light distribution and uniformity ideal for giving the entire plant canopy and equal amount of light
- Designed to withstand harsh conditions and environments and may reduce energy consumption up to 80%
- Emergency battery back-up optional (**GPS-EMGN-BB**)
- Built-in driver, slim profile - easy to ship, pack, and install
- Replaces up to 120W fluorescent tubes
- High Output: 3355 lumens in AC operation
- Polycarbonate lens - diffused, comfortable illumination
- IP66-rated: fixture is protected against dust, intrusion of foreign matter for 2 to 8 hours, and strong water sprays.
- IK10-rated: highly impact-resistant: Protected against an impact of 20 joules. This is equal to the impact of an 11-lb. object dropped from ~1.3 ft. above the impacted surface
- FCC-compliant light fixture: devices do not cause harmful interference to radio communications services

TECHNICAL SPECIFICATIONS

WATTAGE	40W
EFFICACY	130/140 lm/W
COLOR	GREEN (522.5-525nm)
INPUT POWER	100V-277V / 50/60Hz
POWER FACTOR	0.92
THD	20%
WORKING TEMPERATURE	-4°F ~ 122°F
IP RATING	IP66
WARRANTY	5 year limited

DIMENSIONS

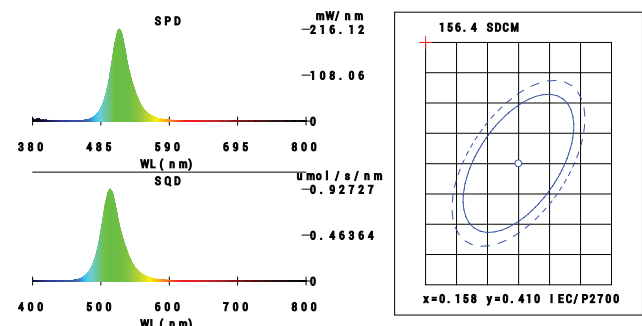


WHAT'S IN THE BOX

- 1x Emergency light • 2x Screws • 1x Mounting bracket

GROSS WEIGHT: 3.86 lbs

SPECTRAL DISTRIBUTION



The lamp is designed with a smooth surface, which makes it easy to clean and maintain.

The GPS-EMGN can be ceiling or suspended-mounted with a suspension kit, and can be daisy-chained for easy installation.