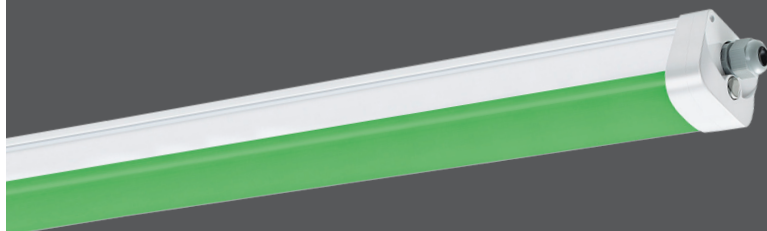


LED LIGHTING SOLUTION FOR COMMERCIAL INDOOR AND GREENHOUSE APPLICATIONS

## Plant-Safe, Soft Green *Emergency Light*



### GPS-EMGN

The GPS-EMGN is a tri-proof LED light, which means that the luminaire possesses at least three 'proofing' properties. Earning its name, the GPS-EMGN is waterproof, dust-proof, and corrosion-proof. The GPS-EMGN emits a plant-safe, soft green light ideal for use in safely illuminating the plant's dark cycle when growing short-day crops. The green light minimally affects photosynthesis during the plant's dark cycle, safely allowing for tending to the crop.

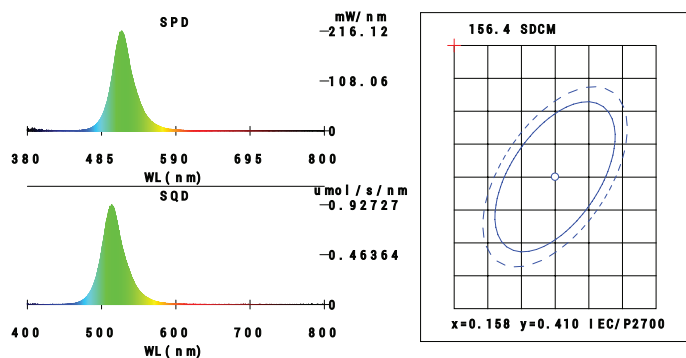
### INTENDED APPLICATIONS

- Integrated Pest Management
- Illumination for Emergencies

### FEATURES & BENEFITS

- Excellent light distribution and uniformity ideal for illuminating a 15' x 15' grow space for work.
- Emergency battery back-up optional (**GPS-EMGN-BB**)
- High Output: 3355 lumens of pure green light.
- Polycarbonate lens - diffused, comfortable illumination.
- IP66-rated.
- IK10-rated: highly impact-resistant.

### SPECTRAL DISTRIBUTION



### WHAT'S IN THE BOX

- 1x Emergency light • 2x Screws • 1x Mounting bracket
- 1x Hard wired 15' 240V power cord with on/off switch 4' from fixture.

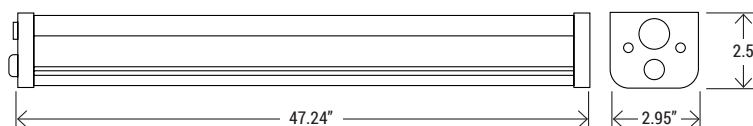
### TECHNICAL SPECIFICATIONS

WATTAGE	40W
EFFICACY	130/140 lm/W
COLOR	GREEN (522.5-525nm)
INPUT POWER	100V-277V / 50/60Hz
POWER FACTOR	0.92
THD	20%
WORKING TEMPERATURE	-4°F ~ 122°F
IP RATING	IP66
WARRANTY	5 year limited

### HEAT LOAD

HEAT LOAD PER FIXTURE	136.49 BTU
-----------------------	------------

### DIMENSIONS



**GROSS WEIGHT: 3.86 lbs**

*The lamp is designed with a smooth surface, which makes it easy to clean and maintain.  
The GPS-EMGN can be ceiling or suspended-mounted with a suspension kit.*